

# The Cross Experience Concierge Map

Concierge paper for walking in the city of Kyoto today.

KIYAMACHI · HIGASHIYAMA FROM CROSS HOTEL KYOTO

## Recommended walking course to discover Kyoto

Kyoto is a rich historical city that is also exceptionally accessible by foot. Allow us to introduce walking courses around the Cross Hotel Kyoto that you can easily visit.

### The Kiyamachi Walking Course, **About 1 hour**

a historical area that offers a glimpse into local life in Kyoto. This walking course along the Takasegawa River, called "Kiyamachi" used to be known as the lumber merchant district. You can still see examples of traditional culture and local peoples' lives from different eras of Kyoto's extended history.

**Lively and Bustling Area, inherit of culture of Kyoto**  
Downtown area of Kyoto, a center of culture since the mid-15th century.

**Quiet and peaceful area, loved by artists and writers**  
This quiet and relaxing neighborhood is lined with centuries-old restaurants.

**West side of the Takasegawa River**  
The west side of the Takasegawa River is the "Kiyamachi" area that runs along a narrow footpath, a narrow footpath, with many hidden gems.

**Exterior is made of brick**  
The exterior is made of brick and the interior has a calm atmosphere.

**KANO**  
A local store that has specialized in handmade tea canisters since 1873.

**Historic handmade hard candy store**  
Historic handmade hard candy store founded in 1919. Business hours: 3:00 PM-6:00 PM. Irregular holidays.

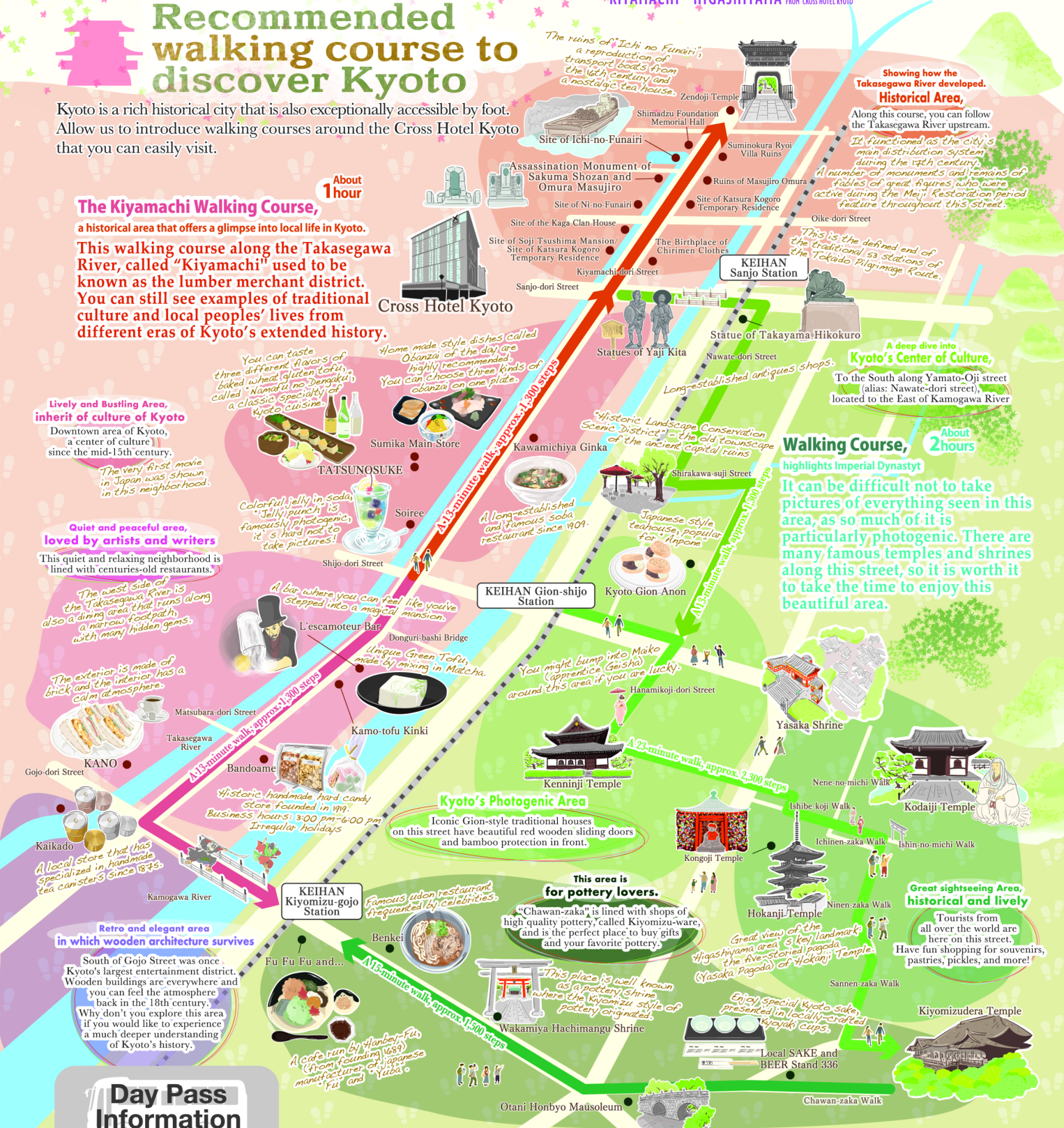
**Retro and elegant area**  
South of Gojo Street was once Kyoto's largest entertainment district. Wooden buildings are everywhere and you can feel the atmosphere back in the 18th century.

**Why don't you explore this area**  
Why don't you explore this area if you would like to experience a much deeper understanding of Kyoto's history.

### Day Pass Information

One day Pass	Fee	Valid area
Subway one-day pass	Adult 800yen Child 400yen	All Lines(Karasuma Line, Tozai Line)
Kyoto subway & bus one-day pass	Adult 1,100yen Child 550yen	All Kyoto subway lines, Kyoto City bus, Kyoto bus, Keihan bus and West JR bus
Kyoto subway & Randen one-day pass	Adult 1,300yen	All Kyoto subway lines and All Raden(Keifuku train) lines

\*Some routes are excluded, check the website for details. [https://www2.city.kyoto.lg.jp/kotsu/webguide/en/ticket/regular\\_1day\\_card\\_comm.htm](https://www2.city.kyoto.lg.jp/kotsu/webguide/en/ticket/regular_1day_card_comm.htm)



**Showing how the Takasegawa River developed. Historical Area,**  
Along this course, you can follow the Takasegawa River upstream.

**It functioned as the city's main distribution system during the 17th century.**  
A number of monuments and remains of figures of great figures who were active during the Meiji Restoration period feature throughout this street.

**This is the defined end of the traditional 53 stations of the Tokaido Pilgrimage Route.**

**A deep dive into Kyoto's Center of Culture,**  
To the South along Yamato-Oji street (alias: Nawate-dori street), located to the East of Kamogawa River

**Walking Course, About 2 hours**  
highlights Imperial Dynasty

**It can be difficult not to take pictures of everything seen in this area,** as so much of it is particularly photogenic. There are many famous temples and shrines along this street, so it is worth it to take the time to enjoy this beautiful area.

**Kyoto's Photogenic Area**  
Iconic Gion-style traditional houses on this street have beautiful red wooden sliding doors and bamboo protection in front.

**This area is for pottery lovers.**  
"Chawan-zaka" is lined with shops of high quality pottery, called Kiyomizu-ware, and is the perfect place to buy gifts and your favorite pottery.

**Great sightseeing Area, historical and lively**  
Tourists from all over the world are here on this street. Have fun shopping for souvenirs, pastries, pickles, and more!